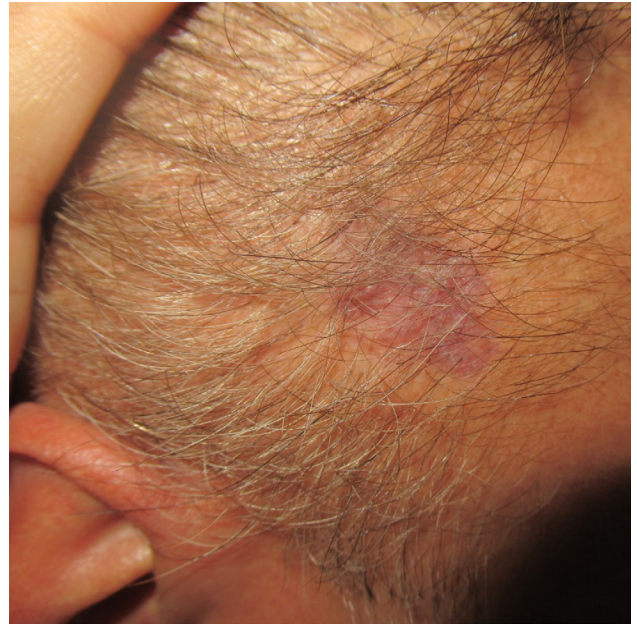


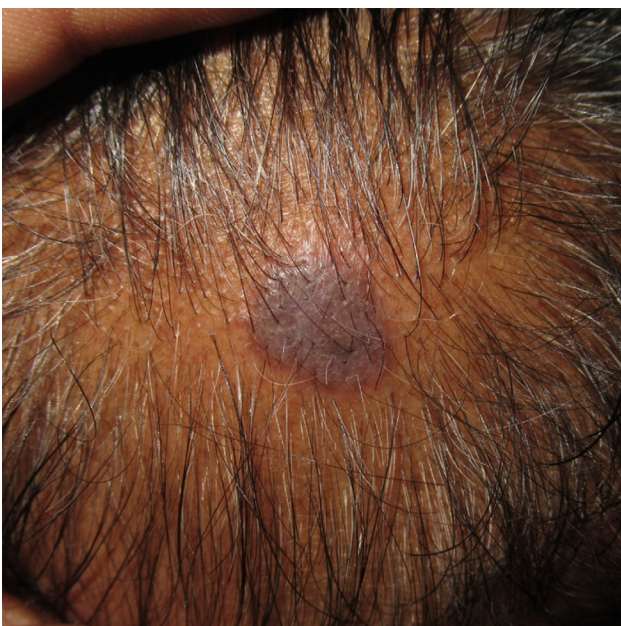
## Supplementary Material



**Figure S1.** Frontal fibrosing alopecia shows receding of the frontotemporal hairline and loss of eyebrows. Note the conspicuous absence of clinically visible erythema.



**Figure S3.** An erythematous plaque of lichen planopilaris.



**Figure S2.** A typical violaceous plaque of lichen planopilaris.



**Figure S4.** A smooth, uniformly atrophic plaque of lichen planopilaris.